

Elgin Farms Santa Cruz County



Description

Nestled high in the beautiful, rolling grasslands of Santa Cruz County's Sonoita-Elgin wine and horse country at an average elevation of 4,775 feet, where the climate is exceptional for year-round living, ranching, and recreation.

Location

57 highway miles from downtown Tucson (intersection of Congress Street & Interstate 10) and 7 miles east of Sonoita, Arizona.

Close to the Empire-Cienega Resource Conservation Area, the Coronado National Forest, Patagonia Lake State Park, Kartchner Cavern State Park, the Nature Conservancy's Patagonia-Sonoita Creek Sanctuary for birds and other wildlife, Parker Canyon Lake, historic ghost towns of the Patagonia area, and the communities of Sonoita, Elgin, Canelo, Patagonia, Sierra Vista, and Nogales, Arizona, the "Gateway to Mexico."

For Sale

SOLD	Parcel A	Approximately 40 acres bordering the Empire-Cienega RCA	\$160,000
SOLD	Parcel B	Approximately 40 acres bordering the Empire-Cienega RCA	\$160,000
SOLD	Parcel C	Approximately 80 acres bordering the Empire-Cienega RCA. Includes well and windmill.	\$300,000
SOLD	Parcel D	Approximately 121.5 acres. Includes house, barn, hay shed, horse paddocks, domestic well equipped with submersible pump, and more.	\$550,000
REDUCED	Parcel E	Approximately 160 acres - could be split into two parcels with a different price for each	Reduced to \$525K from \$575K

Terms

Cash or submit terms offer for consideration.

Contact

Shown by appointment only.

Offered for sale exclusively by:

Headquarters West, Ltd.

Fred S. Baker, fred@headquarterswest.com

300 N. Ash Alley

Tucson, AZ 85701

Phone: (520) 792-2652, Fax: (520) 792-2629

-or-

R. Gene Sparks

P.O Box 1039

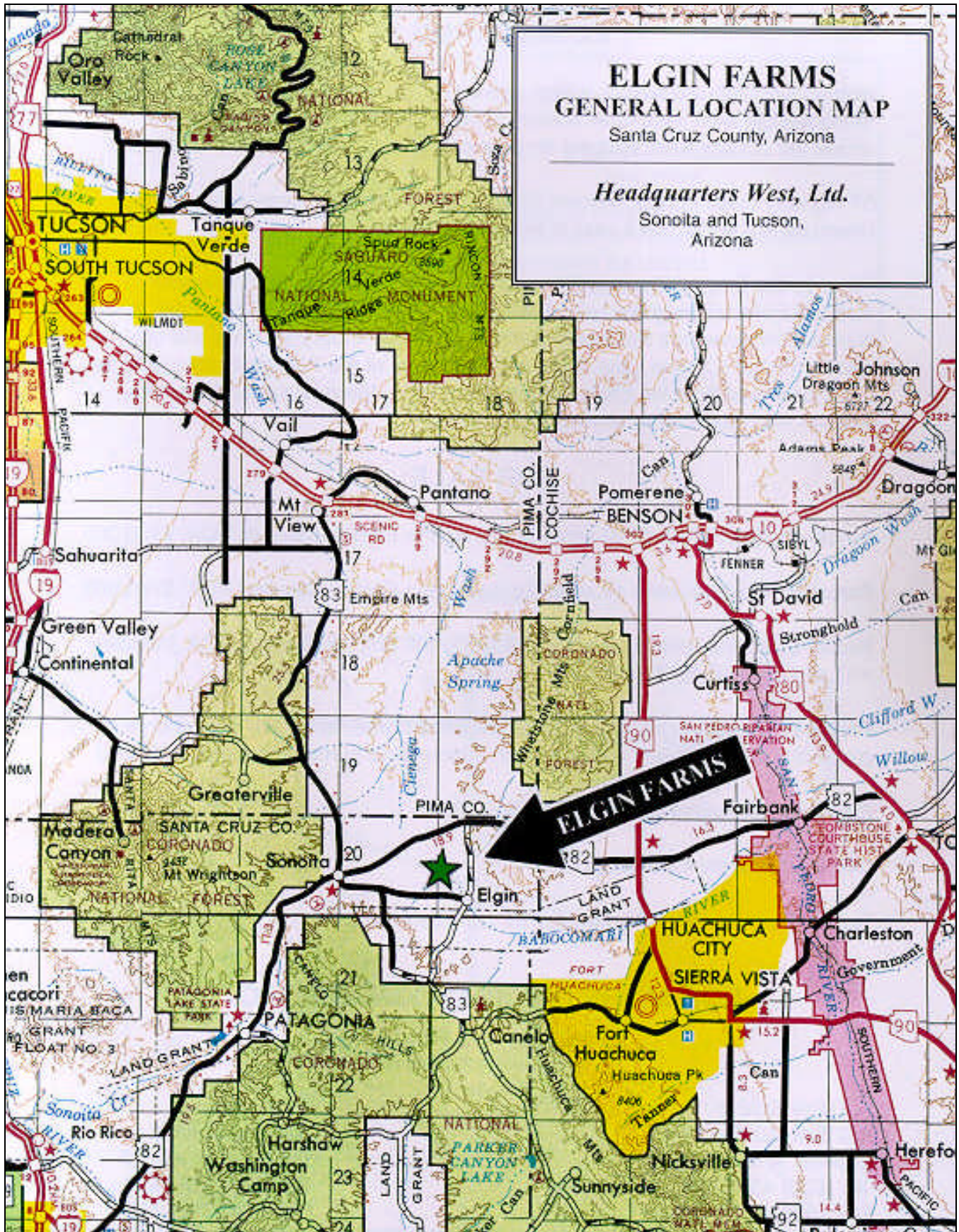
Sonoita AZ

Phone: (520) 455-5834, Fax: (520) 455-5018

Web: www.headquarterswest.com

Disclaimer: All acreage quantities quotes are approximate. This information was obtained from sources deemed to be reliable but is not guaranteed by the Broker. Prospective buyers should check all the facts to their satisfaction. The property is subject to prior sale, price change, or withdrawal.

STREET MAP



PARCEL MAP

